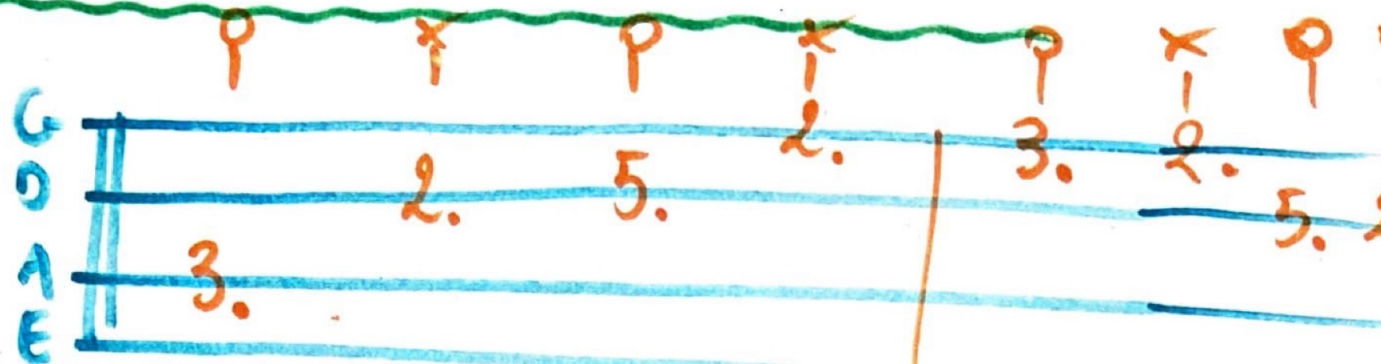


NARCISSISTIC BLUES

INTRO:



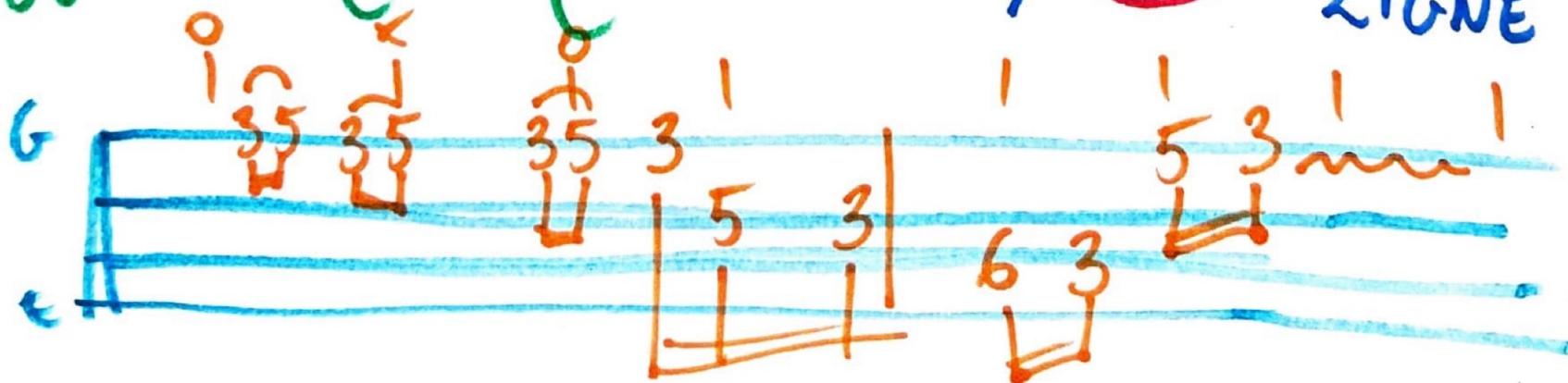
NOTES ÉTIOUFFÉES (NOIRES) 3/4 TPS

GUITAR INTRO		ARRIVÉE BASS DRUM	
C ⁷	C ⁷	C ⁷	C ⁷
F ⁷	F ⁷	C ⁷	C ⁷
G ⁷	F ⁷	C ⁷	C ⁷ / G ⁷

COU ... : MÊME STRUCTURE
NON STOP

SOLO(S) : IDEM

COU DERNIER : STOP 3/4 (F⁷) DERNIÈRE LIGNE





INTRO : ENSEMBLE

A ⁷	A ⁷	A ⁷	A ⁷
D ⁷	D ⁷	A ⁷	A ⁷
E ⁷	D ⁷	A ⁷	A ⁷

COU 1 = // COU 2 = //

SOLO 1 = //

SOLO 2 = ⚠

FIN PÊCHES

(A⁷) / (F)

COU 3 : (+1/2 T) B^{b7} (4 MES) / (E^{b7}) SUSTAIN (1 MES)
 E^{b7} - G - G[#] - A - A

COU 4 = GRILLE (B^{b7}) FIN PÊCHES (B^{b7}) / (F[#])

COU 5 = B⁷ / E⁷ / F^{#7} ...

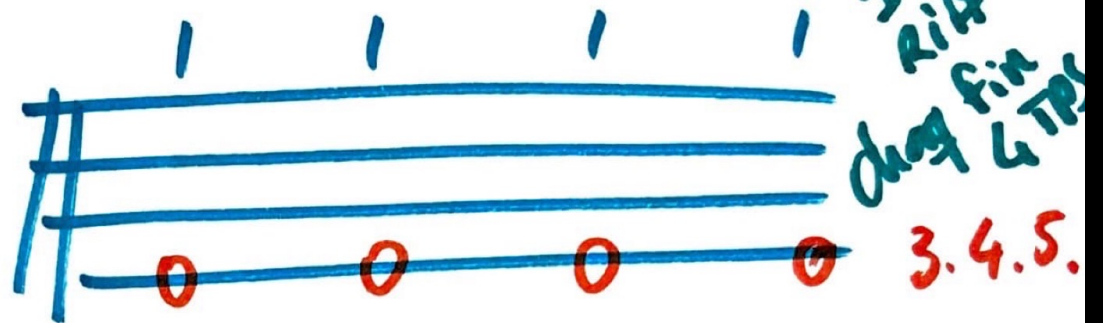
SOLO 3 = //

SOLO 4 = FIN PÊCHES : 5 / 5 / 6 B⁷
 PÊCHES

- SHAME SHAME SHAME - DEMO

INTRO : GUIT : E7 | E7 | E7 | E7

BASS : E7 | E7 | E7 | E7



COU 1 :

E7	E7	E7	E7
A7	A7	E7	E7
B7	A7	E7	E7

COU 2 : STOP Jusque

⚠ (

B7	A7	E7	E7
B7	A7	E7	E7

) ⚠

COU 3 : STOP JUSQUE ... IDEM

⚠ (

B7	A7	E7	E7
B7	A7	E7	E7
B7	A7	E7	E7

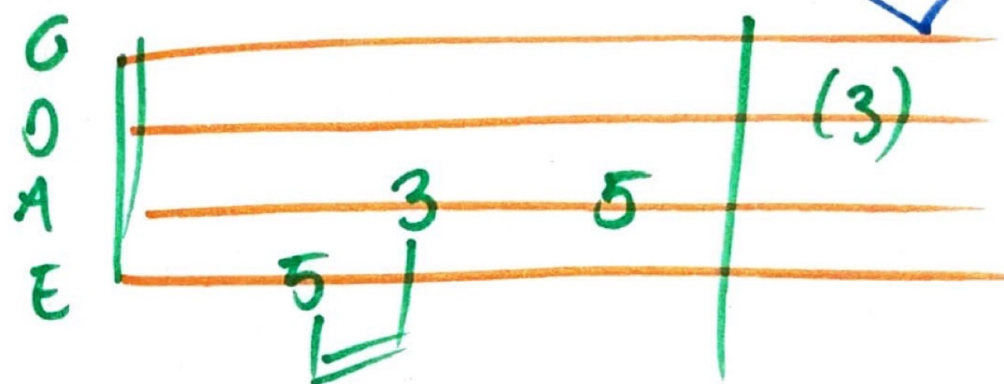
) ⚠

DRIFTING TP SPEED

JAZZ
BASS

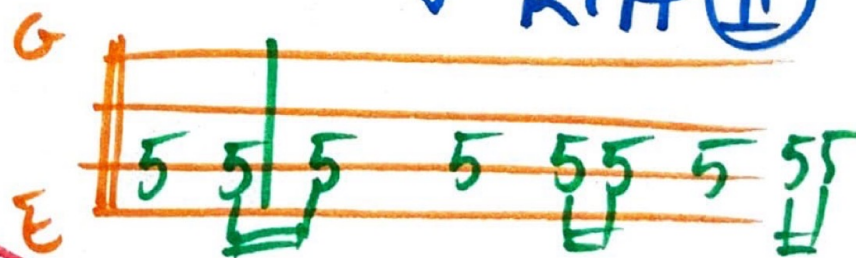
INTRO :

1 2 3 4



D	D	D	D
G	G	D	D
A	G	D	D

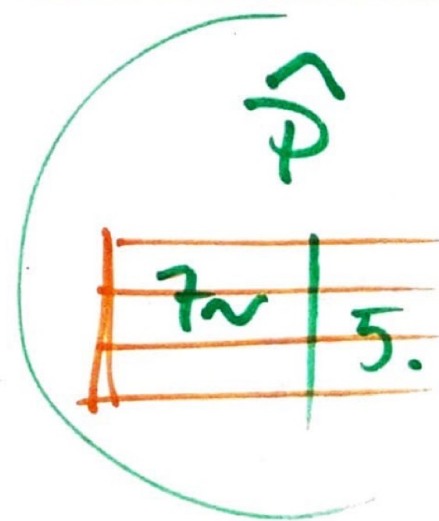
↓ Riff (II)



COUPLET

I & II !

^{PA} D	%	^{PA} D	%
^{PA} D	%	^{Riff} D	%
G	G	D	D
A	G	D	D

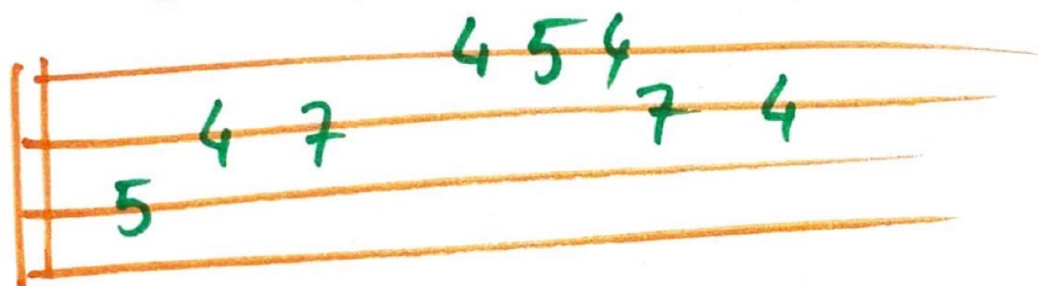


→ Riff (II)

SOLO (I) & (II)

D	D	D	D
G	G	D	D
A	G	D	D

COM Ping CLASSIQUE 7^e

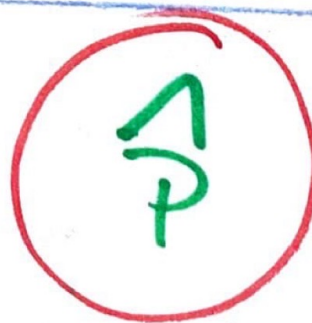


COUPLET (III)

GRILLE COMPLÈTE Ê SOLO

COUPLET (IV)

COUPLET AVEC



INSTRUMENTAL

GRILLE ENTIÈRE JUSQUE LA FIN

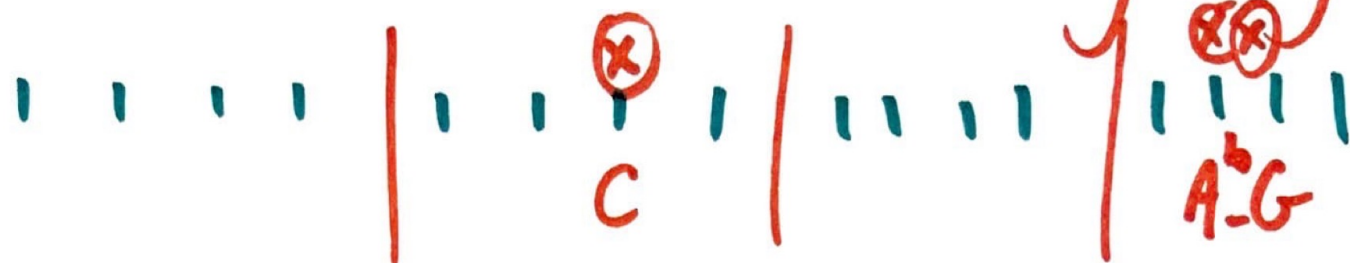
fin riff (II)



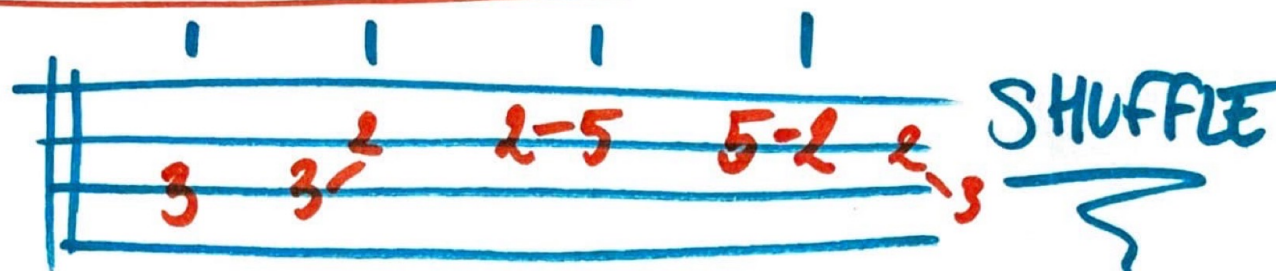
— TAKING CARE OF BUSINESS —

1 - Freddy King. (X)

INTRO :



COMPING:



COV 1:

C ⁷	C ⁷	C ⁷	C ⁷
F ⁷	F ⁷	C ⁷	C ⁷
F ⁷	F ⁷	C ⁷	C ⁷
G ⁷	F ⁷	C ⁷	G ⁷

⚠

COV 2:

// // //

SOLO 1:

C ⁷	C ⁷	C ⁷	C ⁷
F ⁷	F ⁷	C ⁷	C ⁷
G ⁷	F ⁷	C ⁷	G ⁷

SOLO2 :

// // // //

Cov 3 :

ACCORDS COU 1

Cov L:

A CCORDS SOLO

25 dos piace

- EVERYTHING'S GONNA BE ALRIGHT - ... Kim Wilson ...

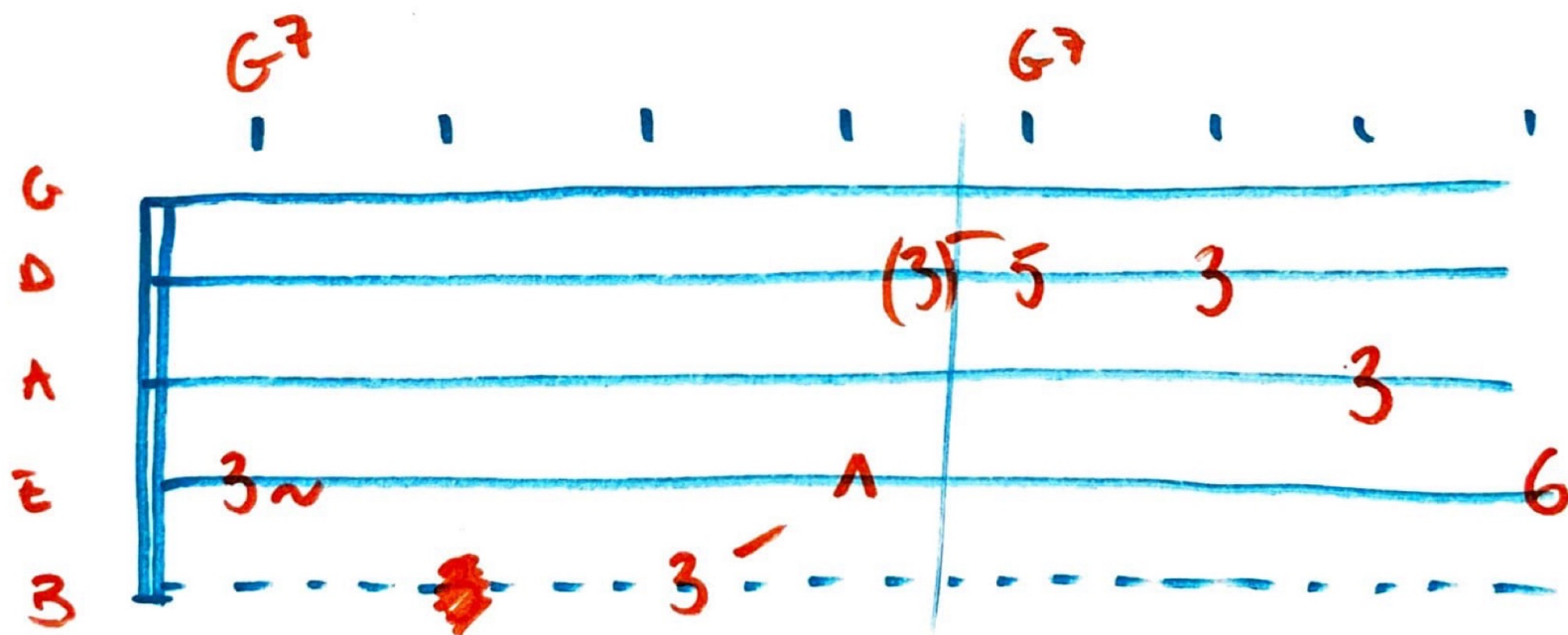
TEMPO LENT

BASE
COMPING
COUNTRY

INTRO : ENSEMBLE

GAMME
MINEURE

G ⁷	G ⁷	G ⁷	G ⁷	I
C ⁷	C ⁷	G ⁷	G ⁷	II
D ⁷	C ⁷	G ⁷	G ⁷ / D ⁷	III



COU 1 : //

COU 2 : //

SOLO 1 : //

COU 3 : //

SOLO 2 : //

COU 4 : //

COU 5 :

I
II
III

—
—
D⁷

STOP

(C⁷)

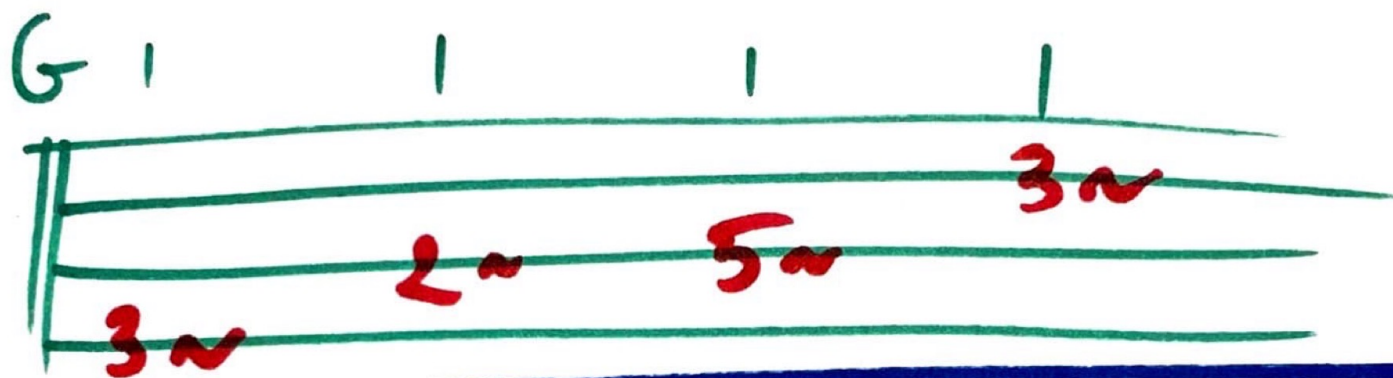
—

—

G^{b7} / G⁷

Slow) HONEY BEE

INTRO: G7 / D7

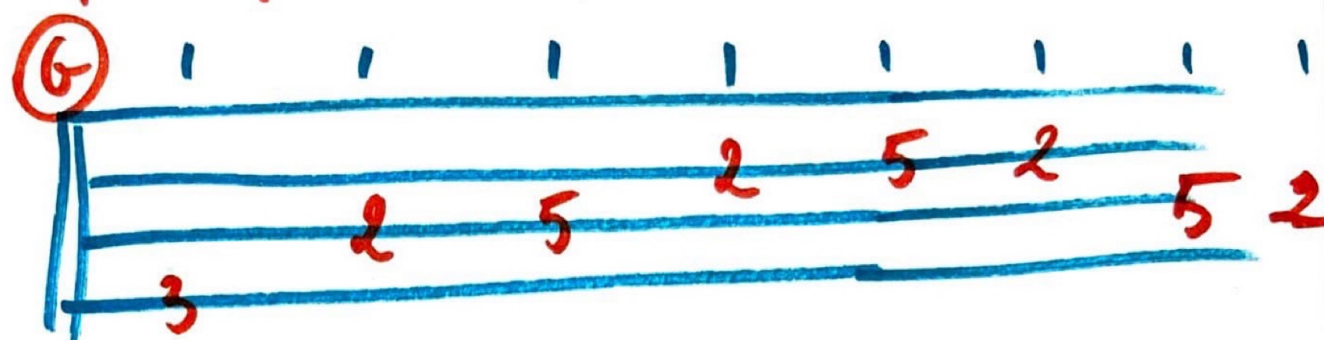


Quick			
G	C	G	G
C	C	G	G
D	C	G⁷ C ⁷	G⁷ D ⁷

- KANSAS CITY -

DEME

COMPING:
SHUFFLE
TRANQUILLE



INTRO = GUIT (8 TPS)

G ⁷	G ⁷	G ⁷	G ⁷
C ⁷	C ⁷	G ⁷	G ⁷
D ⁷	E^b7 D ⁷	G ⁷	E^b7 D ⁷

COU 1 : //

COU 2 : //

SOLO 1 : // Harmo

COU 3 : //

SOLO 2 : // guit

SOLO 3 : // //

COU 4 : //

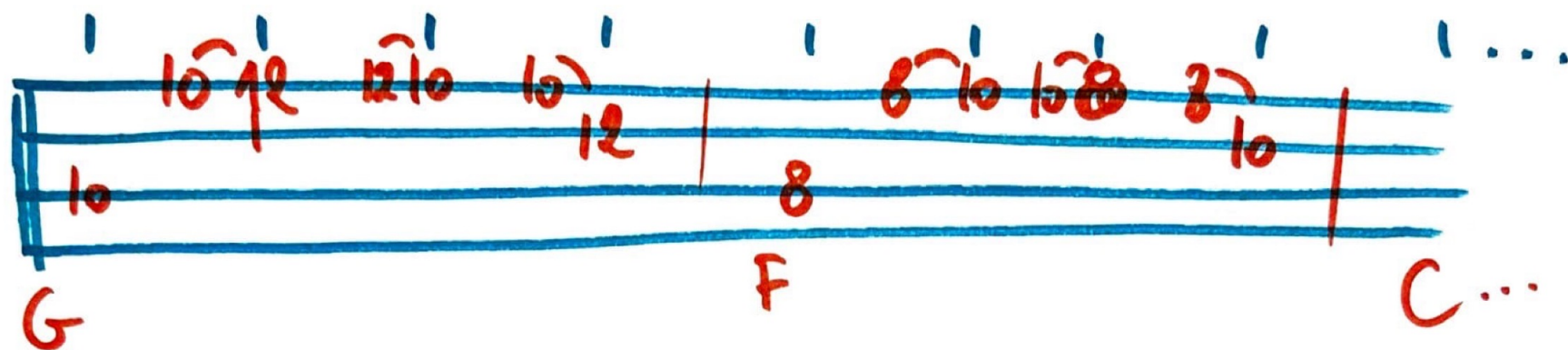
SOLO 4 : // Harmo

SOLO 5 : // //

COU 5 : //

- TAKE DOWN -

INTRO :



COU 1 :

C⁷ | C⁷ | C⁷ | C⁷

MÊME
COMPING }

F⁷ | F⁷ | C⁷ | C⁷

G⁷ | F⁷ | C⁷ | C⁷/G⁷

COU 2 : PÊCHES SUR 1^{re} LIGNE

COU 3 : // // // (x2) Δ

SOLO 1 : WALKIN' BASS

COU 4 : PÊCHES SUR 1^{re} LIGNE (x2) Δ

COU 5 : GRILLE SS PÊCHE

Δ FIN RALENTI ≠ STYLE CHACHACHA

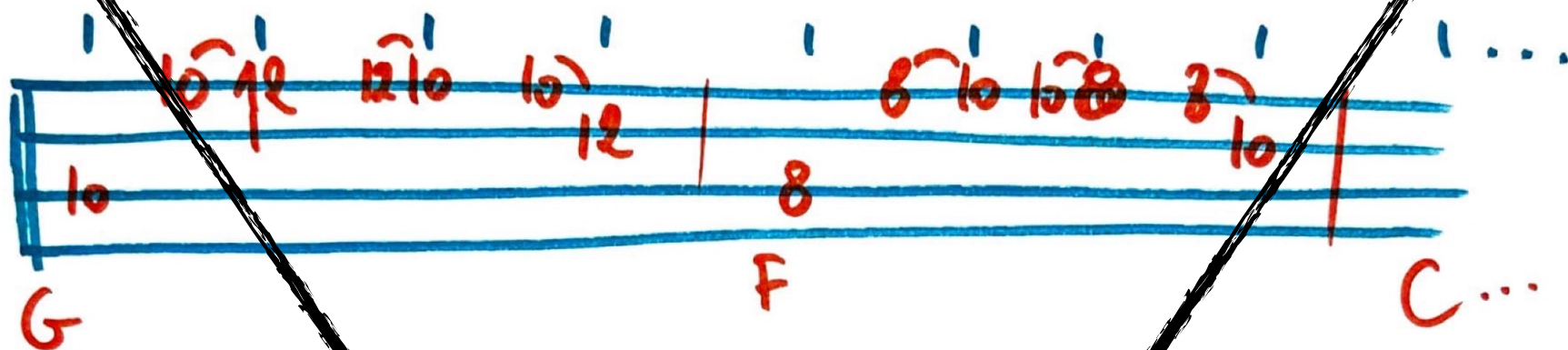
↳ PUIS REPRISE NORMALE } Δ
WALKIN' BASS



↳ FIN RALENTI ≠ STYLE CHACHACHA

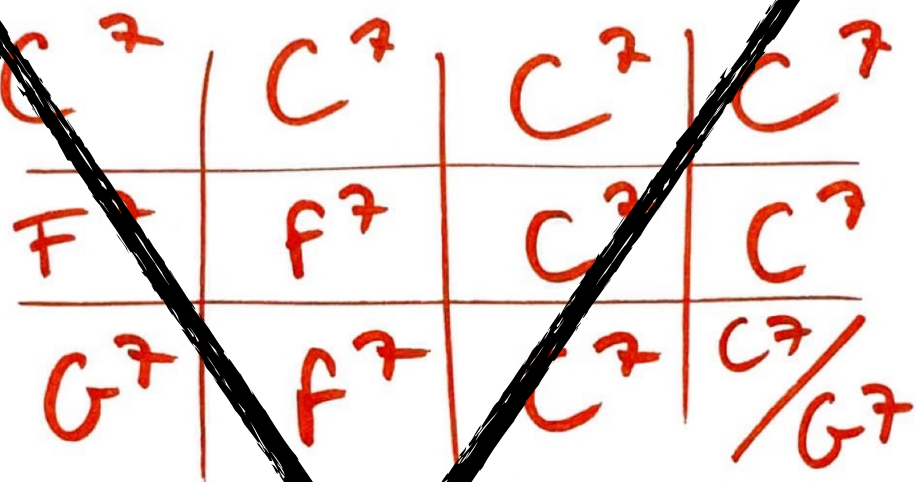
- TAKE DOWN -

INTRO :



COU 1 :

MÊME
COMPING }



COU 2 : PÊCHES SUR 1^{re} LIGNE

COU 3 :

// // // (x2) Δ

SOLO 1 :

WALKIN' BASS

COU 4 :

PÊCHES SUR 1^{re} LIGNE (x2) Δ

COU 5 :

GRILLE SS PÊCHE

Δ FIN RALENTI ≠ STYLE CHACHACHA

↳ PUIS REPRISE NORMALE } Δ
WALKIN' BASS

↳ FIN RALENTI ≠ STYLE CHACHACHA

- CRAZY ABOUT THAT THING -
- Johnny Dyr -

COMPING LENT:



INTRO:
INB

Δ DECALAGE
Don't say it

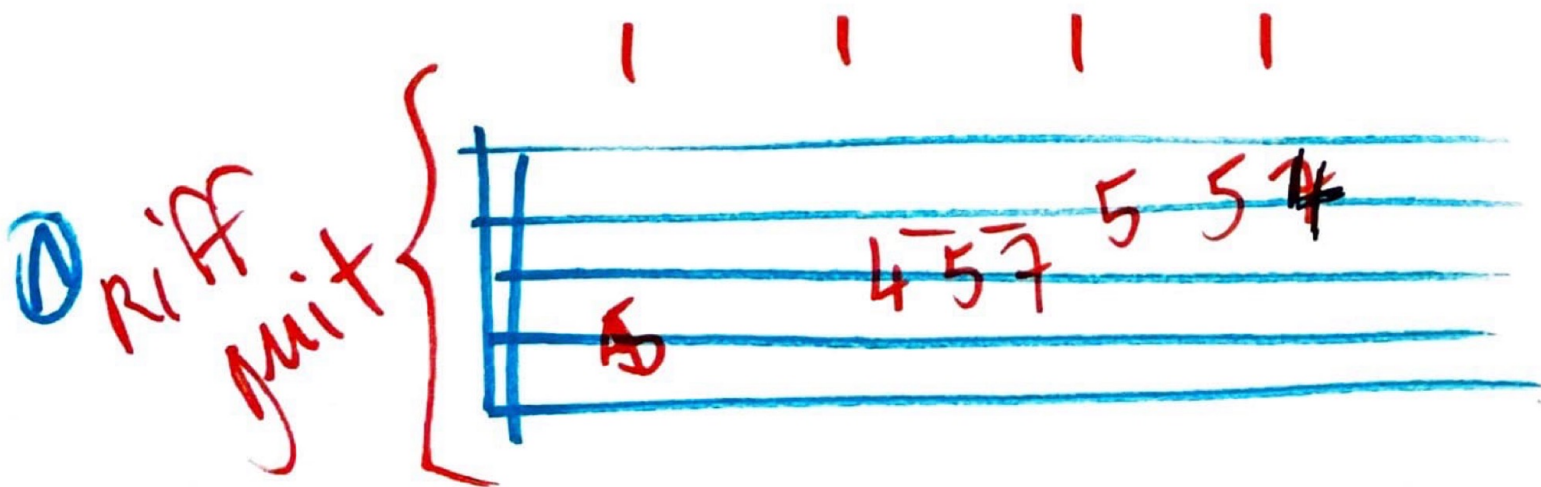
⊕ LIKE metro name

INTRO: ~~Ø~~ HARMONICA 4 measures

GAMMES
(min) & MAJ

CORDE GRAVE

A ⁷	A ⁷	A ⁷	A ⁷
Δ D ⁷	D ⁷	A ⁷	A ⁷
E ⁷	D ⁷	A ⁷	E ⁷



FEEL LIKE RAMBLIN'

RESTER

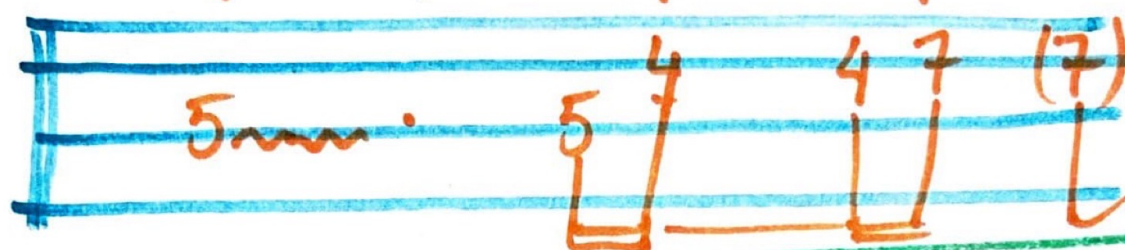
SUR (1)

INTRO: GUIT TREMOLO

(1)



(1)



COV I):

D	D	D	D
G	G	D	D
A	A	D	D

COV II): IDEM

COV III): IDEM

SOLO : IDEM (X2)

COV IV): IDEM

COV V): IDEM

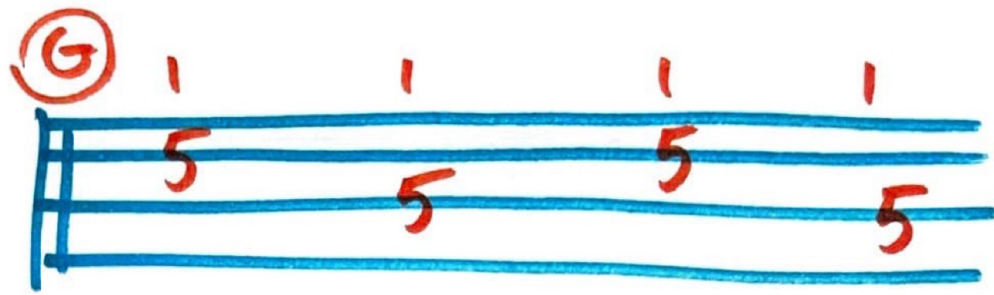
FIN SOLO :

RESTER SUR (1)



- STICKY ROLLIN - Little Jinks

COMPING :
(COUNTRY)



INTRO : (G)

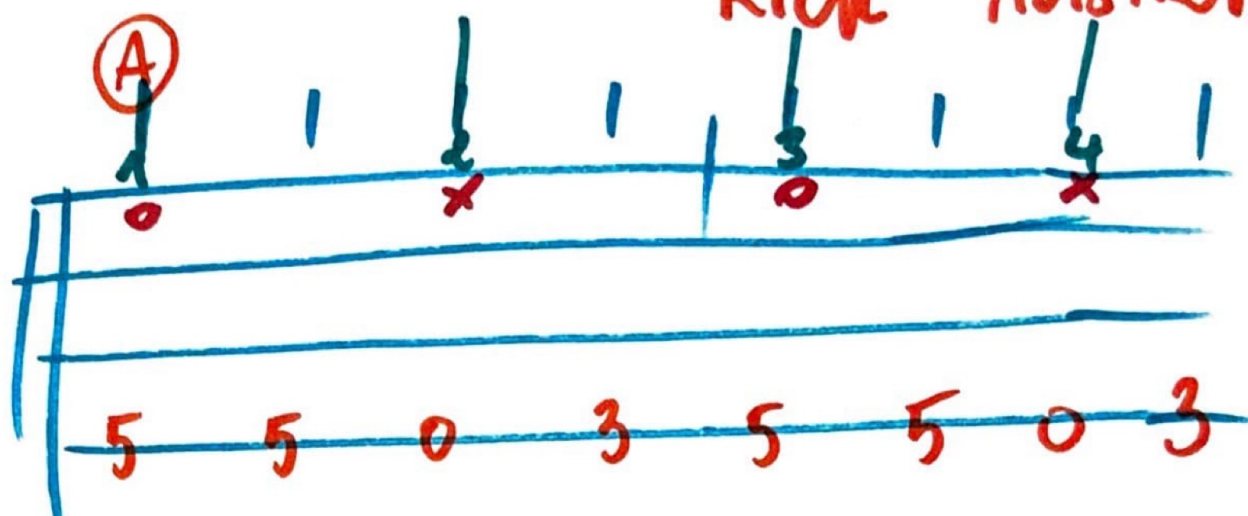
1	{	G ⁷	G ⁷	G ⁷	G ⁷
		G ⁷	G ⁷	G ⁷	G ⁷
2	{	C ⁷	C ⁷	G ⁷	G ⁷
		C ⁷	C ⁷	G ⁷	G ⁷
3	{	D ⁷	C ⁷	G ⁷	G ⁷
		C ⁷	C ⁷	G ⁷	G ⁷
4	{	C ⁷	C ⁷	G ⁷	G ⁷
		D ⁷	C ⁷	G ⁷	G ⁷

SOLO : (G⁷) REPRISÉ 2 / FIN RIFF
GUIT

⊕

- SUGAR SWEET - Johnny Byer Rick Holstrom

COMPING :
(SPEED)



INTRO: A^7 | A^7 | A^7 | A^7/E^7

COU 4 :

A^7	A^7	A^7	A^7 STOP couplets
D^7	D^7	A^7	A^7
E^7	D^7 STOP couplets	A^7	A^7

AVEC CHANT

COU 2 : IDEM

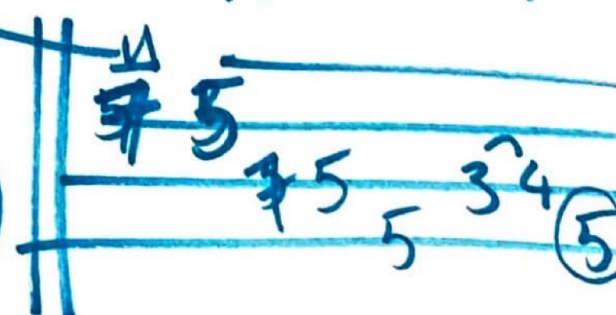
SOLO 1 : IDEM (PAS DE STOP)

SOLO 2 : // // // //

COU 3 : IDEM

LD FIN E / D / D^b / A

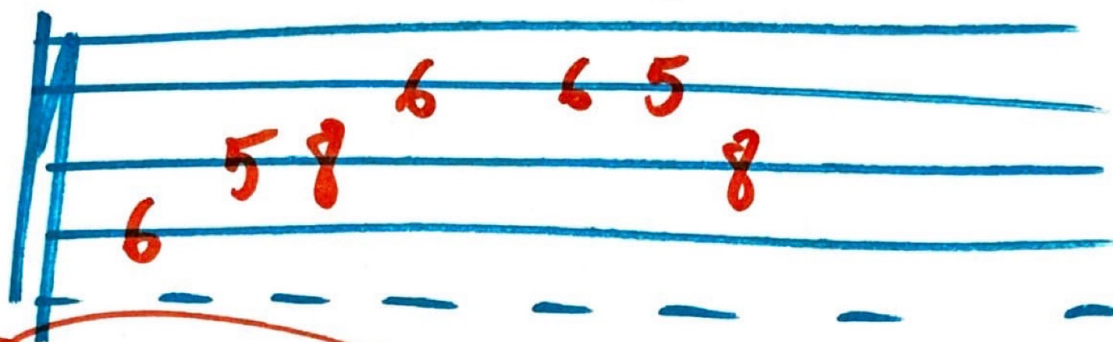
x x x x x x x x x x



"I Just Want A Little Bit" - Magic Yarn

Bb

COMPING:



INTRO :

Riff 1x / 2
Bb7 / Eb7

! ~~Sau~~ quick change
INTRO

COU :

Bb7	Bb7	Bb7	Bb7
Eb7	Eb7	Bb7	Bb7
(F) PEUVE	(Eb7) PEUVE	Bb7	STOP

// ~~n sur couplet~~

SOLO 2 :

SOLO 1 :

SOLO 2 :

COU 3 :

SOLO 3 :

COU 4 :

! RÉPÉTER DERNIÈRE
LIGNE
(F) - Eb7 - Bb7 - Bb7

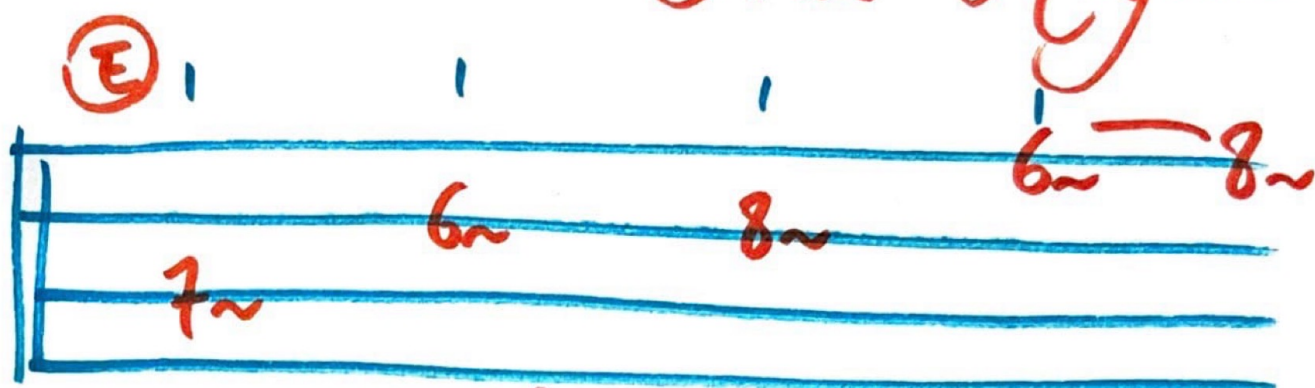


- ROAMING WOMAN BLUES -

Lilas Logan

COMPING :

LENT



Quick CHANGES

E ⁷	A⁷	E ⁷	E ⁷
A ⁷	A ⁷	E ⁷	E ⁷
B ⁷	A ⁷	E ⁷	E ⁷ / B ⁷

E

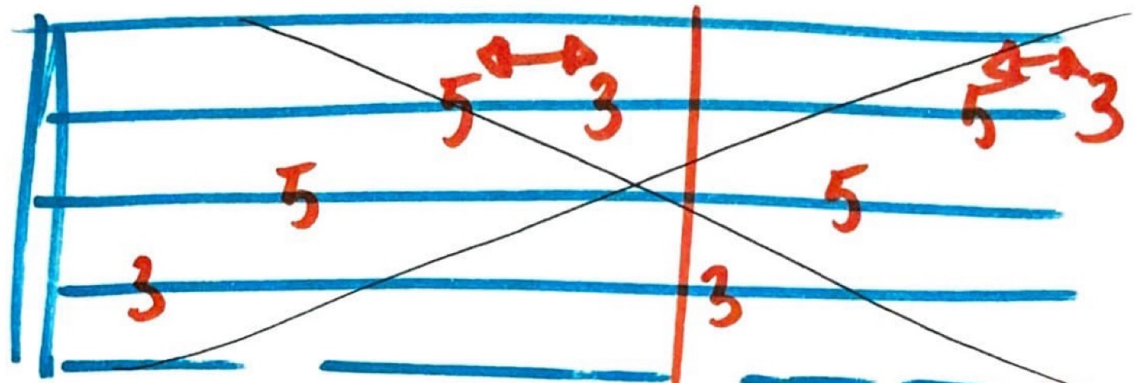
E - B - C - C[#] - D



- OH BABY - Kim Wilson -

SHUFFLE SPEED

COMPING :



G AMTE

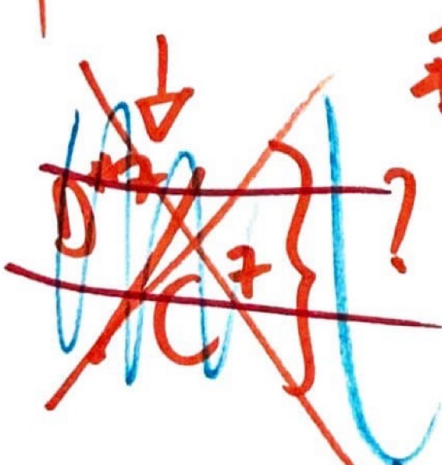
MINURE
M AJEURE

JEU
JAZZ

C7 ^{spz}
couplet

QUICK CHANGE COUPLET 1, 2, 4

G ⁷	G ⁷ / C ⁷	G ⁷	G ⁷
C ⁷	C ⁷	G ⁷	G ⁷
D ⁷	C ²	G ⁷	D ⁷



3^e couplet G⁷ / 8 mesures

INTRO :	//	cou 3 :	//
cou 1 :	// 2C	cou 4 :	// 2C
1 2 :	// 2C	SOLO 3 :	//
[SOLO 1 :	//	SOLO 4 :	//
1 2 :	//	SOLO 5 :	//

FIN (ONNO)



HANDLE

DEMO

INTRO :

| | | |



(x3)

⊗ PÊCHE APRÈS 4^e TPS

B

E7	E7	B7	B7
F#7	G7 / F#7	B7	G7 / F#7

COU 1 :

B7	B7	B7	B7
E7	E7	B7	B7
F#7	G7 / F#7	B7	G7 / F#7

COU 2 : IDEM

COU 3 : IDEM

SOLO 1 : IDEM

SOLO 2 : //

COU 4 : B7 B7 B7 (B7) 2 TRIOLETS

LA SUITE NORMALE

SOLO 3 : B7 B7 B7 (B7) PÊCHES CIRE TPS

SOLO 4 : NORMAL

COU 5 : //

COU 6 : //

FIN :

| | | |

~~7 6 7 8 8~~

B . B^b . B . C . C

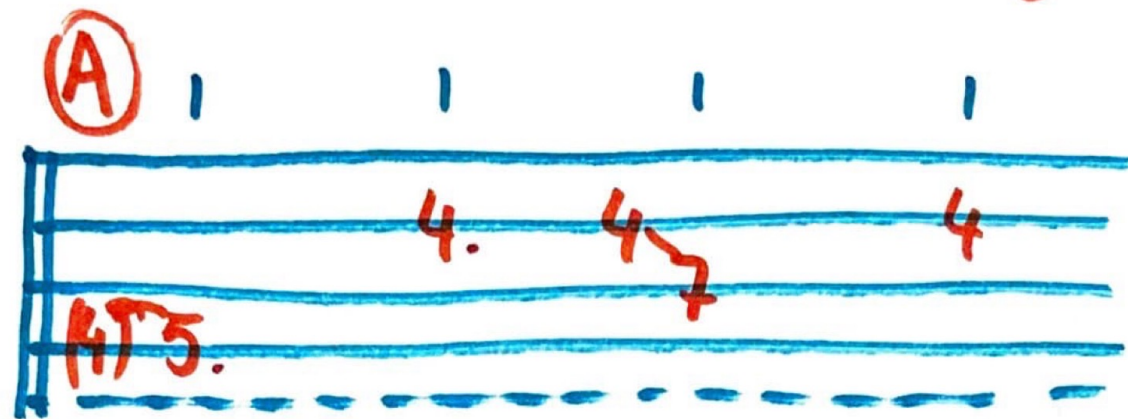
RE INTRO : SUR LIÈNE B7

SPEED SUR ~~F#7~~ | E7 | B7 | B7

F#7 | G7 / F#7 | B-B^b-B^b

(x3)

- GUMBO BLUES - Kim Wilson



INTRO = GUITARE INTRO puis POURSUIVRE PHRASE
QUICK CHANGE COMPLET

A7	(A7)	A7	A7
D7	D7	A7	A7
E7	D7	A7	A7/E7

COU 1 = //

// 2 = //

SOLO 1 = //

X SOLO 2 = //

COU 3 = PÊCHES A7 CHAQUE MESURE LIGNE 1

SOLO 3 = //

SOLO 4 = A MONTÉE TRIQUET : A7 | Bb

COU 4 = F I N A9 | A7

A7 - A#7
pdt montée
Solo

- NO MORE DOGGIN' -

INTRO :

E ⁷	E ⁷	E ⁷	E ⁷
B ⁷	A ⁷	E ⁷	E ⁷

♩ ♩ ♩ ♩

A musical staff with a treble clef and a key signature of one sharp (F#). The notes are 5, 4, 7, 4, 5, 4, 7, 4, with a bar line after the fourth note. Above the staff are vertical lines indicating a sequence of notes.

COUplet I) :

E ⁷	A ⁷	E ⁷	E ⁷
A ⁷	A ⁷	E ⁷	E ⁷ ⊗

⊗ ↘

F [#]	G [#]	A	A [#]
B	A	G [#]	F [#]

MONTÉE

COU II) : ∅ Q.C.

COU III) : ∅ Q.C.

Solo : QC

COU IV) : ∅ QC

↘ MONTÉE : F[#] E⁷ / E⁷
F[#] E⁷ / E⁷

ⓧ2

↓

FIN

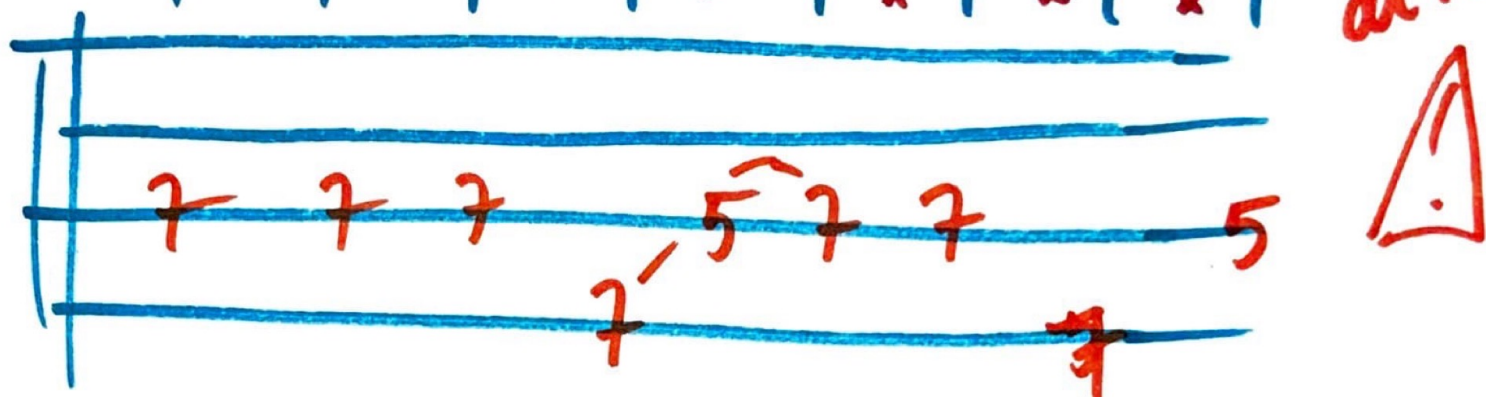
B ⁷	A ⁷
----------------	----------------

♩ ♩ ♩ ♩

— BIG LEG WOMAN — DEMO

COMPING : SPEED

$\begin{array}{cccccccc} \circ & \times & \circ & \times & \circ & \times & \circ & \times \\ \downarrow & & \downarrow & & \downarrow & & \downarrow & \end{array}$



INTRO : PETIT RIFF GUIT // RESTER SUR E7

COV 1 :

E^7	E^7	E^7	E^7
A^7	A^7	E^7	E^7
B^7	B^7	E^7	E^7

COU 2 : IDEM

SOLO 1 : //

SOLO 2: //

col 3: //

COU 4 : IDEM ⊕ RÉPÉTER DERNIÈRE LIGNE

$\Delta \quad B^7 \mid B^7 \mid E^7 \mid E^7$

- SHE'S TOUGH -

TEMPO MIDDLE



COU I):

F	F	F	F
F	F	F	F
A [#]	A [#]	F	F
C	A [#]	F	F/C

STOP

STOP FIRE

COU II):

F	F	F	F
A [#]	A [#]	F	F
LC	LA [#]	F	F/C

STOP

SOLO: (B)

COU III): (A)

FIN:
F EN BOUCLE

- HOWLIN FOR MY BABY -

Howlin Wolf

INTRO = TS em m tps

TP Cent
middle

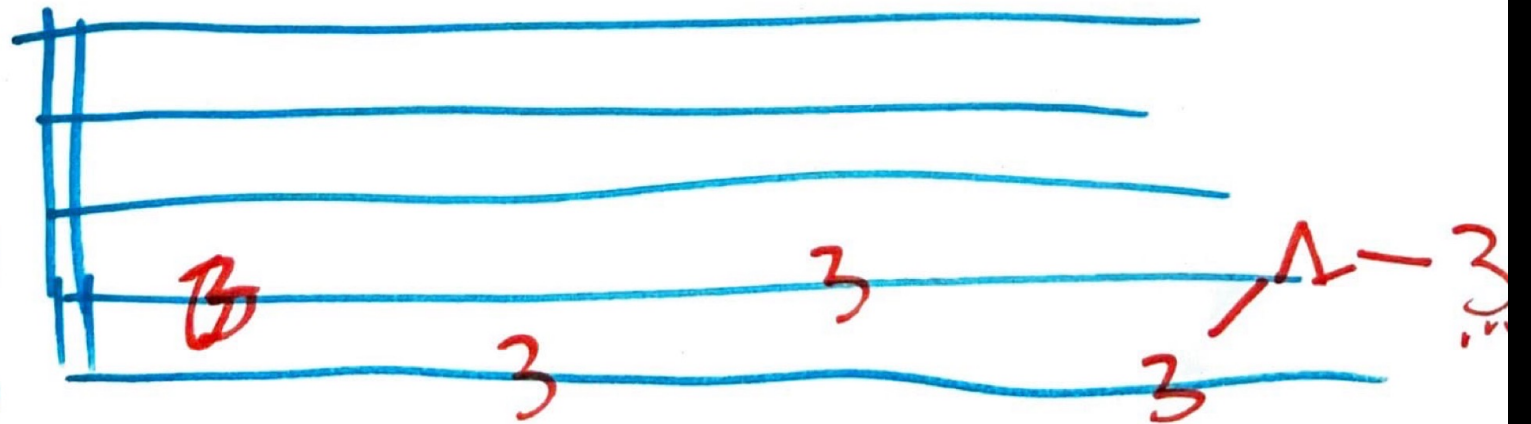


G ⁷	G ⁷	G ⁷	G ⁷
G ⁷	G ⁷	G ⁷	G ⁷
C ²	C ⁷	C ²	C ²
G ⁷	G ⁷	G ⁷	G ⁷
D ⁷	D ⁷	C ²	C ⁷
G ⁷	G ⁷	G ⁷	G ⁷



Country
comping

B



- SLOPPY DRUNK -

Jimmy Rogers

INTRO : ??? 2 measures horns

JEU 5AET
CTR BASSE

TP SPEED

A ⁷	A ⁷	A ⁷	A ⁷
D ⁷	D ⁷	A ⁷	A ⁷
E ⁷	D ⁷	A ⁷	A ⁷ /E ⁷

COMPING 1 :

1 1 1 1
x x x x x x x

INTRO :

A⁷ octave

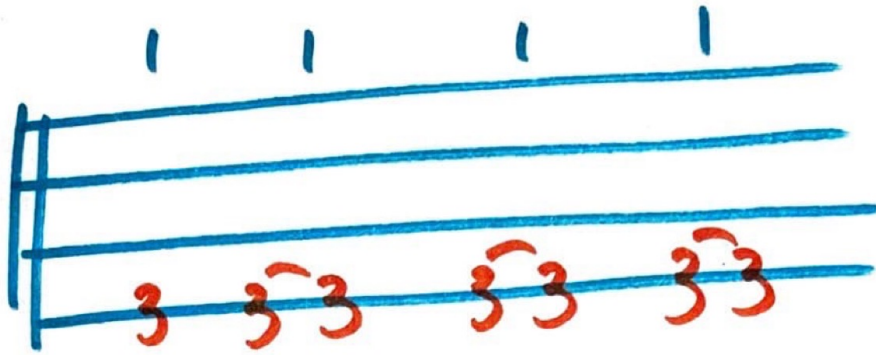
COU 1 :

- BLOW WIND BLOW -

MUDDY
WATERS

COMPING :

TERMINATOR



QUICK
CHANGE

G ⁷	C ⁷	G ⁷	G ⁷
C ⁷	C ⁷	G ⁷	G ⁷
D ⁷	C ⁷	G ⁷	G ⁷ / D ⁷

COMPING 2 :



En attente

BEATRICE BEATRICE

COMPING TERMINATOR II

INTRO :

~~E~~⁷ | ~~D~~⁷ | A⁷ | ~~A~~⁷ / E⁷

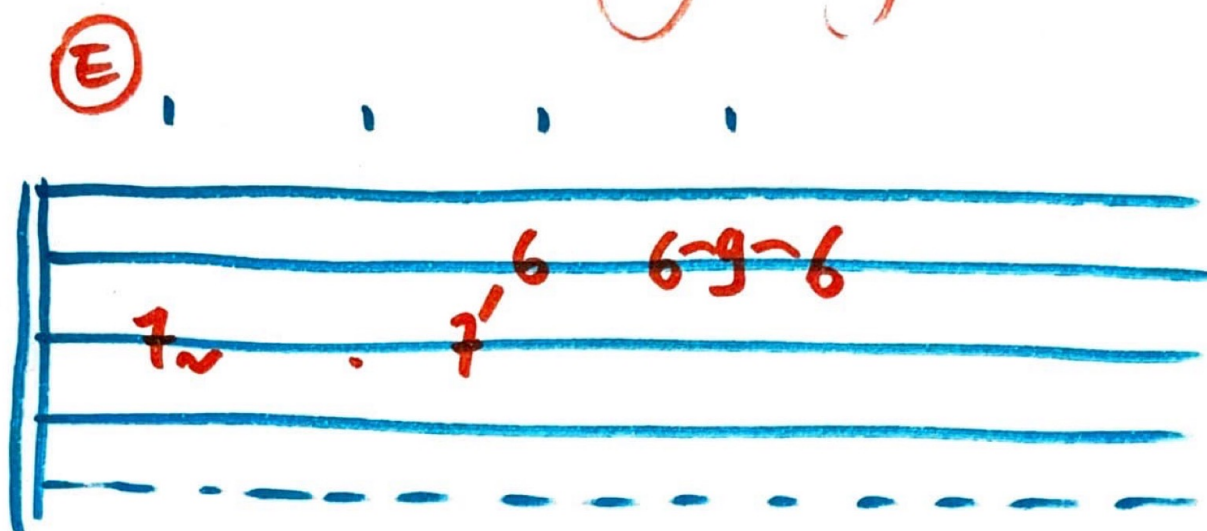
COMPING REFRAIN ⊕ COUPLET

A ⁷	A ⁷	A ⁷	A ⁷
D ⁷	D ⁷	A ⁷	A ⁷
E ⁷	D ⁷	A ⁷	A ⁷ / E ⁷

- BABY WHAT YOU WANT ME TO DO -

Jimmy Red

BALLAD
COMPIING
(SHUFFLE)
MID TP



E ⁷	E ⁷	E ⁷	E ⁷
A ⁷	A ⁷	E ⁷	E ⁷
B	B	E	E / B ⁷

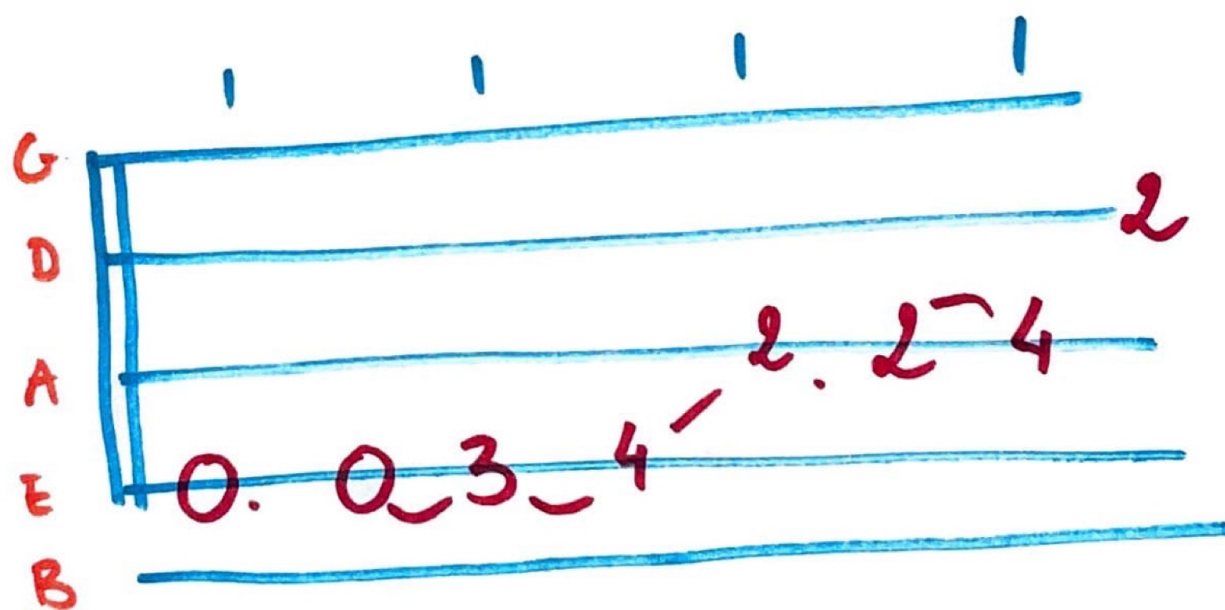
- COME BABY COME - L.D.

INTRO : MONTÉE DRUM (1 MESURE)

COU 1 :

E^7	E^7	E^7	E^7
A^7	A^7	E^7	E^7
B^7	A^7	E^7	E^7 / B^7

COU 2 : ... 9.



FIN :

$G - G^b - E / C^\# / E - G^b - G - G^\#$
 $E^b - E \sim$

LONG DISTANCE CALL

TEMPO LENT

INTRO:

Handwritten musical notation for the Intro section, consisting of two staves (G and E) with fingerings and fret numbers.

Staff 1 (G): 1 2 3 4 | 1 2 3 4

Staff 2 (E): 3 3 3 | 5 5 5 5

Staff 3 (G): 1 1 1 1 | 1 1 1 1

Staff 4 (E): 1 0 1 3 (3) | 1 (0) 1 (3) 3 3 (3)

COUPLET:

Handwritten musical notation for the Couplet section, consisting of a 3x4 grid of notes and a circled 'E' with a triangle above it.

F	<u>E</u> [△]	F	F
B ^b	B ^b	f	F
C	B ^b	F C	F C

BASS
SUR CHAQUE
TEMPS

COUPLET:

(II) &
(III)

Handwritten musical notation for the Couplet section, consisting of a 3x4 grid of notes and a circled 'F' with a triangle above it.

F	E	<u>F</u> [△]	F
B ^b	B ^b	F C	F
C	B ^b	F C	f C

△

